



U.S. AIDS TO NAVIGATION SYSTEM

on navigable waters except Western Rivers

LATERAL SYSTEM AS SEEN ENTERING FROM SEAWARD

<p>PORT SIDE ODD NUMBERED AIDS</p> <p>GREEN LIGHT ONLY</p> <p>FLASHING (2) </p> <p>FLASHING </p> <p>OCCULTING </p> <p>QUICK FLASHING </p> <p>ISO </p> <p>1 LIGHT <i>1" FI G 6s</i></p> <p>9 LIGHTED BUOY <i>G "9" FI G 4s</i></p> <p>9 CAN <i>G "9"</i></p> <p>5 DAYBEACON <i>G "5"</i></p>	<p>PREFERRED CHANNEL NO NUMBERS - MAY BE LETTERED</p> <p>PREFERRED CHANNEL TO STARBOARD TOPMOST BAND GREEN</p> <p>GREEN LIGHT ONLY</p> <p>COMPOSITE GROUP FLASHING (2+1) </p> <p>A LIGHTED BUOY <i>GR "A" FI (2+1) G 6s</i></p> <p>U CAN <i>GR "U"</i></p> <p>S CAN <i>GR "S"</i></p>	<p>PREFERRED CHANNEL NO NUMBERS - MAY BE LETTERED</p> <p>PREFERRED CHANNEL TO PORT TOPMOST BAND RED</p> <p>RED LIGHT ONLY</p> <p>COMPOSITE GROUP FLASHING (2+1) </p> <p>B LIGHTED BUOY <i>RG "B" FI (2+1) R 6s</i></p> <p>C NUN <i>RG "C" N "C"</i></p> <p>G DAYBEACON <i>RG "G"</i></p>	<p>STARBOARD SIDE EVEN NUMBERED AIDS</p> <p>RED LIGHT ONLY</p> <p>FLASHING (2) </p> <p>FLASHING </p> <p>OCCULTING </p> <p>QUICK FLASHING </p> <p>ISO </p> <p>2 LIGHT <i>2" FI R 6s</i></p> <p>8 LIGHTED BUOY <i>R "8" FI R 4s</i></p> <p>6 NUN <i>R "6" N "6"</i></p> <p>2 DAYBEACON <i>R "2"</i></p>
--	---	--	--

AIDS TO NAVIGATION HAVING NO LATERAL SIGNIFICANCE

<p>ISOLATED DANGER NO NUMBERS - MAY BE LETTERED</p> <p>WHITE LIGHT ONLY</p> <p><i>FI (2) 5s</i> </p> <p>A LIGHTED <i>BR "A" FI (2) 5s</i></p> <p>C UNLIGHTED <i>BR "C"</i></p>	<p>SAFE WATER NO NUMBERS - MAY BE LETTERED</p> <p>WHITE LIGHT ONLY MORSE CODE</p> <p><i>Mo (A)</i> </p> <p>A MR <i>RW "A"</i></p> <p>B SPHERICAL <i>RW SP "B"</i></p> <p>N UNLIGHTED AND/OR SOUND <i>RW "N"</i></p>
<p>DAYBOARDS - MAY BE LETTERED</p> <p>WHITE LIGHT ONLY</p> <p>NR </p> <p>NG </p> <p>NB </p> <p><i>RW Bn</i> <i>GW Bn</i> <i>BW Bn</i></p>	<p>RANGE DAYBOARDS - MAY BE LETTERED</p> <p>KGW KWG KWB KBW KWR KRW KRB KBR KGB KBG KGR KRG</p>
<p>SPECIAL MARKS - MAY BE LETTERED</p> <p>YELLOW LIGHT ONLY</p> <p>FIXED FLASHING </p> <p>A UNLIGHTED <i>C "A"</i></p> <p>C UNLIGHTED <i>N "C"</i></p> <p>A UNLIGHTED <i>Y "A" Bn</i></p> <p>B LIGHTED <i>Y "B" FI</i></p> <p>SHAPE OPTIONAL—BUT SELECTED TO BE APPROPRIATE FOR THE POSITION OF THE MARK IN RELATION TO THE NAVIGABLE WATERWAY AND THE DIRECTION OF BUOYAGE.</p>	

Aids to Navigation marking the Intracoastal Waterway (ICW) display unique yellow symbols to distinguish them from aids marking other waters. Yellow triangles indicate aids should be passed by keeping them on the starboard (right) hand of the vessel. Yellow squares indicate aids should be passed by keeping them on the port (left) hand of the vessel. A yellow horizontal band provides no lateral information, but simply identifies aids as marking the ICW.

TYPICAL INFORMATION AND REGULATORY MARKS

INFORMATION AND REGULATORY MARKERS

WHEN LIGHTED, INFORMATION AND REGULATORY MARKS MAY DISPLAY ANY WHITE LIGHT RHYTHM EXCEPT QUICK FLASHING, Mo(A), AND FLASHING (2)

MOORING BUOY
WHITE WITH BLUE BAND
MAY SHOW WHITE REFLECTOR OR LIGHT

SWIM AREA
EXPLANATION MAY BE PLACED OUTSIDE THE CROSSED DIAMOND SHAPE, SUCH AS DAM, RAPIDS, SWIM AREA, ETC.

BOAT EXCLUSION AREA

ROCK DANGER
THE NATURE OF DANGER MAY BE INDICATED INSIDE THE DIAMOND SHAPE, SUCH AS ROCK, WRECK, SHOAL, DAM, ETC.

CONTROLLED AREA
TYPE OF CONTROL IS INDICATED IN THE CIRCLE, SUCH AS SLOW, NO WAKE, ANCHORING, ETC.

INFORMATION
FOR DISPLAYING INFORMATION SUCH AS DIRECTIONS, DISTANCES, LOCATIONS, ETC.

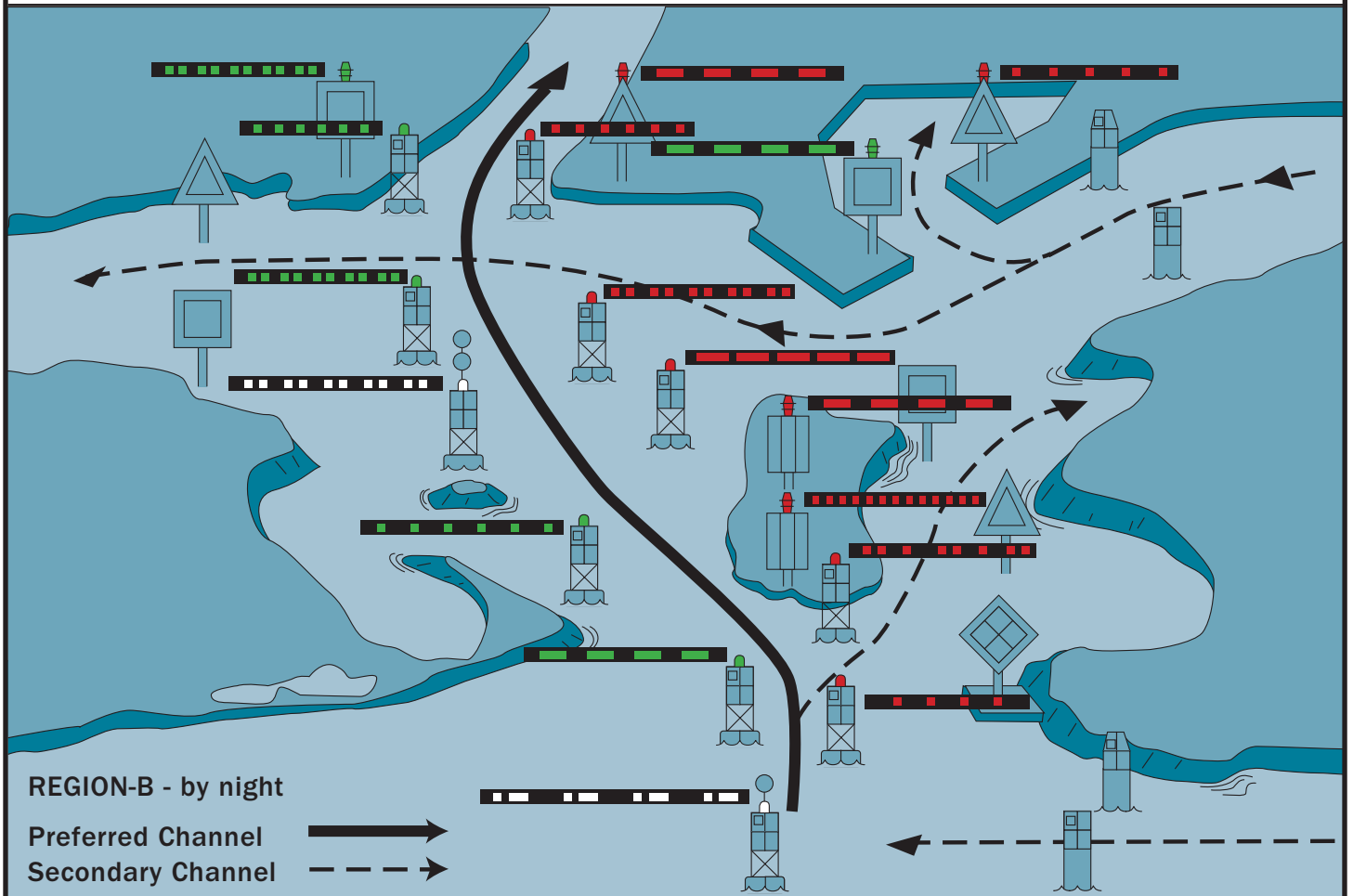
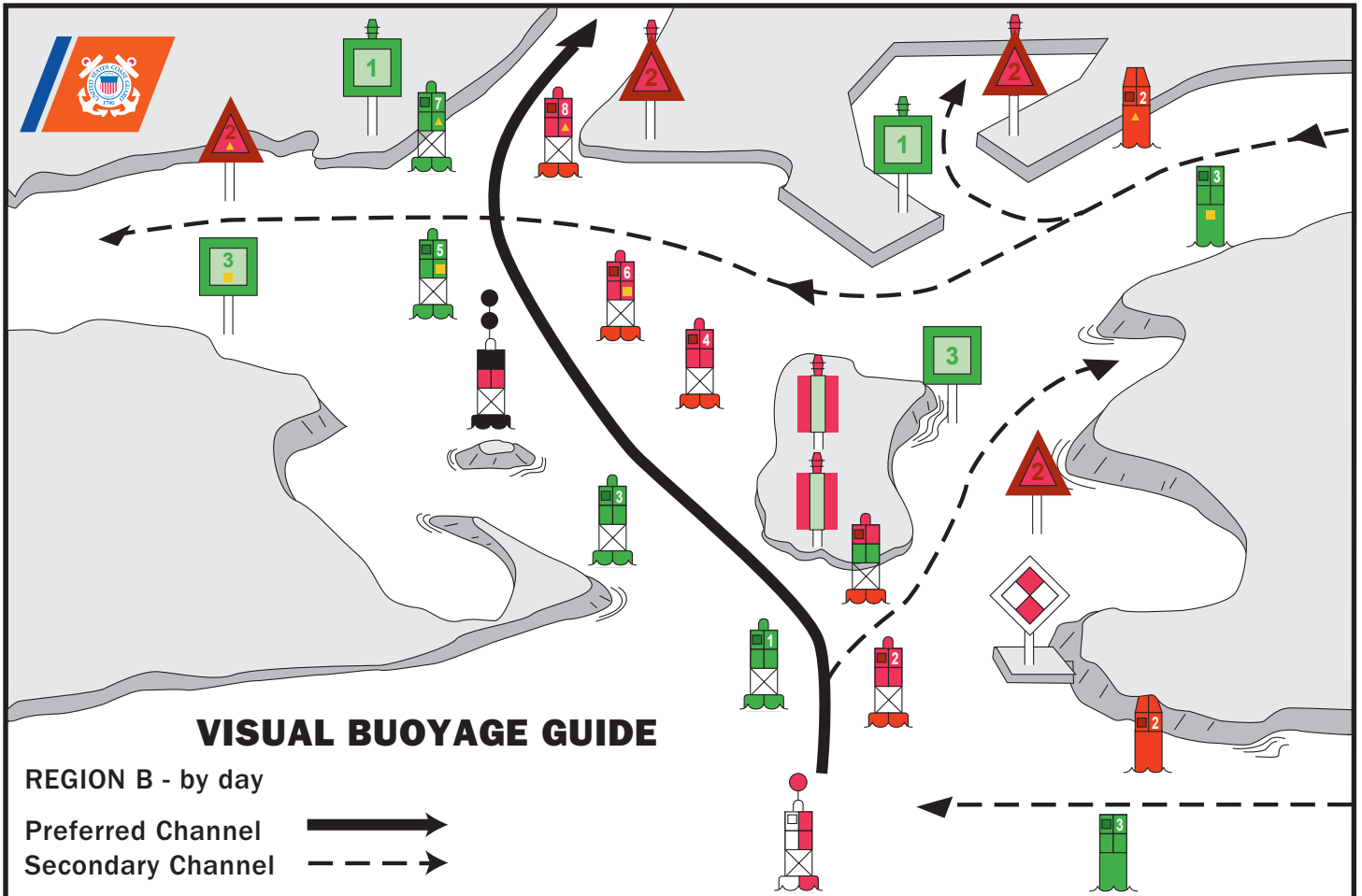
BUOY USED TO DISPLAY REGULATORY MARKERS

MAY SHOW WHITE LIGHT MAY BE LETTERED

DANGER

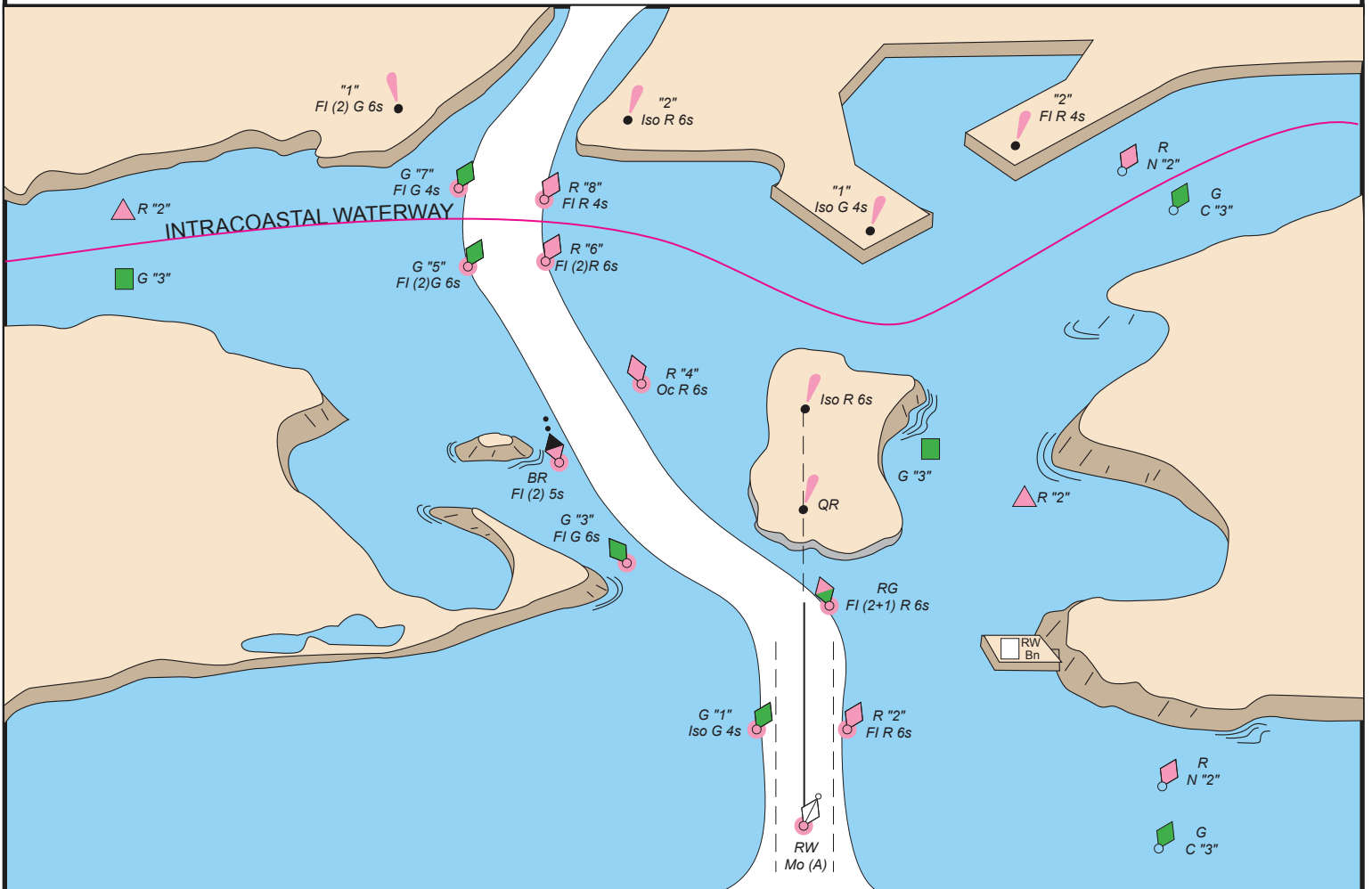
SLOW NO WAKE

PLATE 1





FICTITIOUS NAUTICAL CHART





U.S. AIDS TO NAVIGATION SYSTEM

on the Western River System

AS SEEN ENTERING FROM SEAWARD

<p>PORT SIDE OR RIGHT DESCENDING BANK</p> <p>GREEN OR WHITE LIGHTS</p> <p>FLASHING ISO</p> <p>LIGHT LIGHTED BUOY CAN</p> <p>SG CNG</p> <p>PASSING DAYBEACON CROSSING DAYBEACON</p> <p>176.9 MILE BOARD</p>	<p>PREFERRED CHANNEL MARK JUNCTIONS AND OBSTRUCTIONS COMPOSITE GROUP FLASHING (2+1)</p> <table border="1"> <tr> <td data-bbox="505 342 812 831"> <p>PREFERRED CHANNEL TO STARBOARD TOPMOST BAND GREEN FI (2+1) G</p> <p>JG</p> </td> <td data-bbox="812 342 1125 831"> <p>PREFERRED CHANNEL TO PORT TOPMOST BAND RED FI (2+1) R</p> <p>JR</p> </td> </tr> </table> <p>DAYBOARDS HAVING NO LATERAL SIGNIFICANCE</p> <p>MAY BE LETTERED</p> <p>WHITE LIGHT ONLY</p> <p>NB</p> <p>A</p>	<p>PREFERRED CHANNEL TO STARBOARD TOPMOST BAND GREEN FI (2+1) G</p> <p>JG</p>	<p>PREFERRED CHANNEL TO PORT TOPMOST BAND RED FI (2+1) R</p> <p>JR</p>	<p>STARBOARD SIDE OR LEFT DESCENDING BANK</p> <p>RED OR WHITE LIGHTS</p> <p>FLASHING (2) ISO</p> <p>LIGHT LIGHTED BUOY NUN</p> <p>MAY BE LIGHTED</p> <p>TR CNR</p> <p>PASSING DAYBEACON CROSSING DAYBEACON</p> <p>123.5 MILE BOARD</p>
<p>PREFERRED CHANNEL TO STARBOARD TOPMOST BAND GREEN FI (2+1) G</p> <p>JG</p>	<p>PREFERRED CHANNEL TO PORT TOPMOST BAND RED FI (2+1) R</p> <p>JR</p>			

SPECIAL MARKS--MAYBE LETTERED

UNLIGHTED LIGHTED

NY

SHAPE: OPTIONAL--BUT SELECTED TO BE APPROPRIATE FOR THE POSITION OF THE MARK IN RELATION TO THE NAVIGABLE WATERWAY AND THE DIRECTION OF BUOYAGE.

YELLOW LIGHT ONLY
FIXED FLASHING

MOORING BUOY
WHITE WITH BLUE BAND
MAY SHOW WHITE REFLECTOR OR LIGHT

TYPICAL INFORMATION AND REGULATORY MARKS

INFORMATION AND REGULATORY MARKERS

WHEN LIGHTED, INFORMATION AND REGULATORY MARKERS MAY DISPLAY ANY LIGHT RHYTHM EXCEPT QUICK FLASHING, Mo(a) AND FLASHING (2)

NW WHITE LIGHT ONLY

DANGER

BOAT EXCLUSION AREA

DANGER

CONTROLLED AREA

EXPLANATION MAY BE PLACED OUTSIDE THE CROSSED DIAMOND SHAPE, SUCH AS DAM, RAPIDS, SWIM AREA, ETC.

THE NATURE OF DANGER MAY BE INDICATED INSIDE THE DIAMOND SHAPE, SUCH AS ROCK, WRECK, SHOAL, DAM, ETC.

TYPE OF CONTROL IS INDICATED IN THE CIRCLE, SUCH AS SLOW, NO WAKE, ANCHORING, ETC.

INFORMATION

BUOY USED TO DISPLAY REGULATORY MARKERS

MAY SHOW WHITE LIGHT
MAY BE LETTERED

STATE WATERS

INLAND (STATE) WATERS OBSTRUCTION MARK
MAY SHOW WHITE REFLECTOR OR QUICK FLASHING WHITE LIGHT

BLACK-STRIPED WHITE BUOY

Used to indicate an obstruction to navigation, extends from the nearest shore to the buoy. This means "do not pass between the buoy and the nearest shore." This aid is replacing the red and white striped buoy within the USWMS, but cannot be used until all red and white striped buoys on a waterway have been replaced.

ATON Structures for Fixed Aids

Single Pile
Wood, Steel, or Concrete



Spindle
(Also known as a 2147)



Battered Pile Dolphin



Multiple Pile Platform



Free Standing Skeleton Tower
(Also known as a 1944 tower)



Guyed Skeleton Tower



Clustered Pile Dolphin



ATON Buoys

Unlighted Buoy



Lighted Buoy



Regulatory Buoy



Junction/Preferred Channel Buoy



Mooring Buoy



NOAA Buoys

DART



3 Meter



6 Meter



10 Meter



12 Meter

